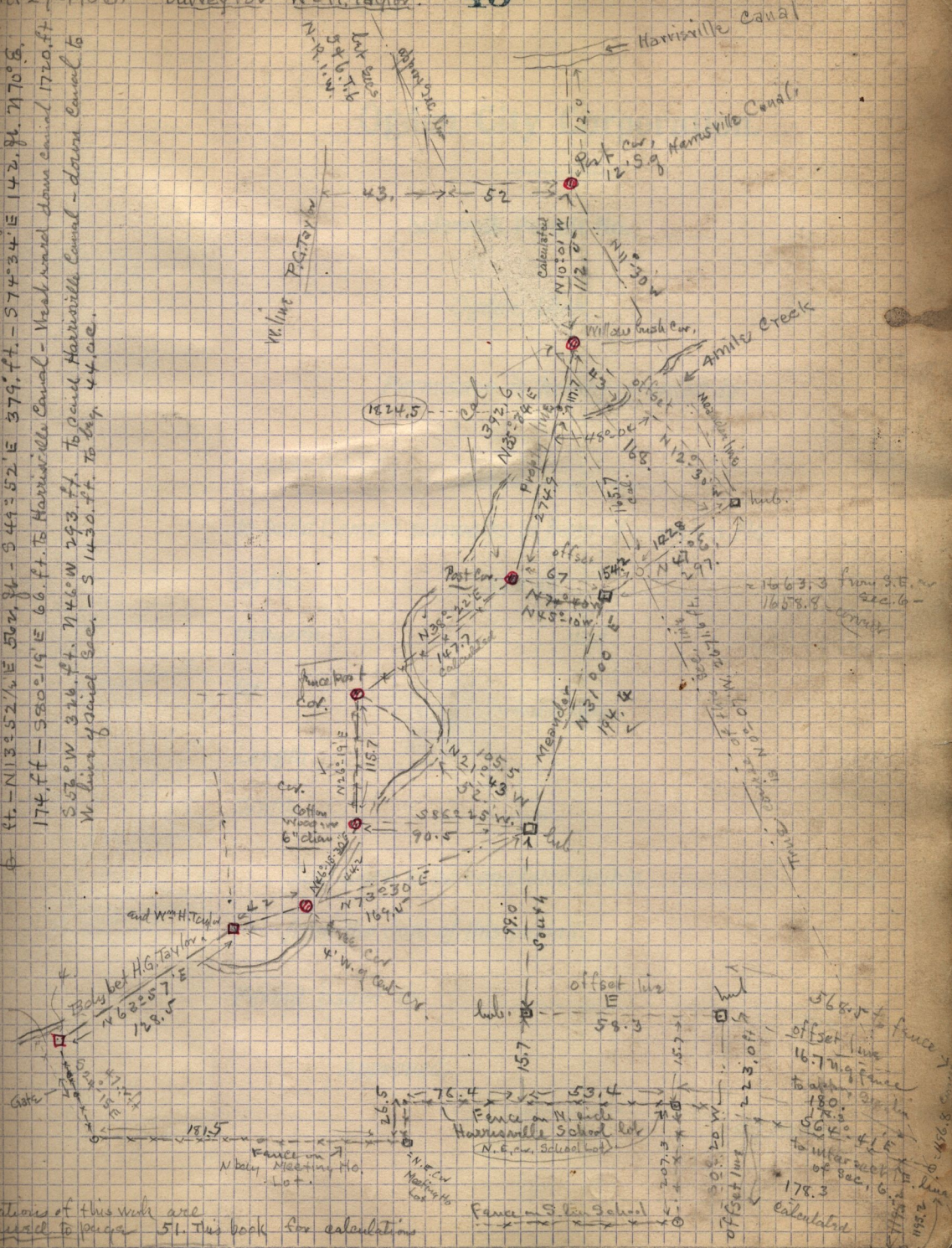


Harvey G. Taylor to Pleasant G. Taylor. 7/4 SW 1/4 Sec. 5, T. 6 N. - R. 1 W. Bq. et point
 590. ft. N. from S.W. cor. ad 1/4 Sec. Thence N 89° E. 272.6 ft. - 719° 27' E. 334.0
 ft. - N 113° 52' 1/2" E 500. ft. - S 44° 52' E 379. ft. - S 74° 34' E 142. ft. - 717° 0' E.
 174. ft - S 80° 19' E 66. ft. To Harrisville Canal - Veakward down canal 1720. ft
 S 56° W 326. ft. N 46° W 293. ft. To point Harrisville Canal - down Canal to
 W. line of Grand Sec. - S 143° 0' E. To top 44.0 c.

20
 20



calculations of this work are
 continued to page 51. This book for calculations

368.0 + fence
 offset line
 16.7 m. g. fence
 to each side
 180.0
 178.3
 564.0 ± E
 to inter each
 of sec. 6.
 178.3
 calculated